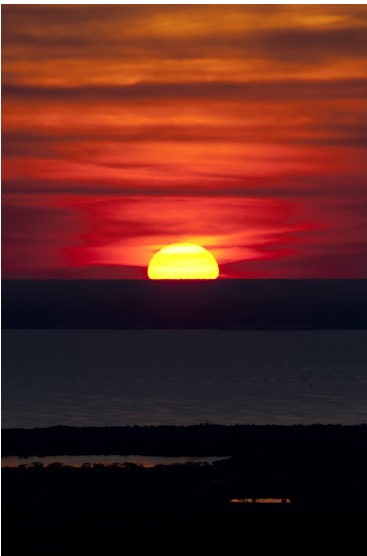




beach

Memory

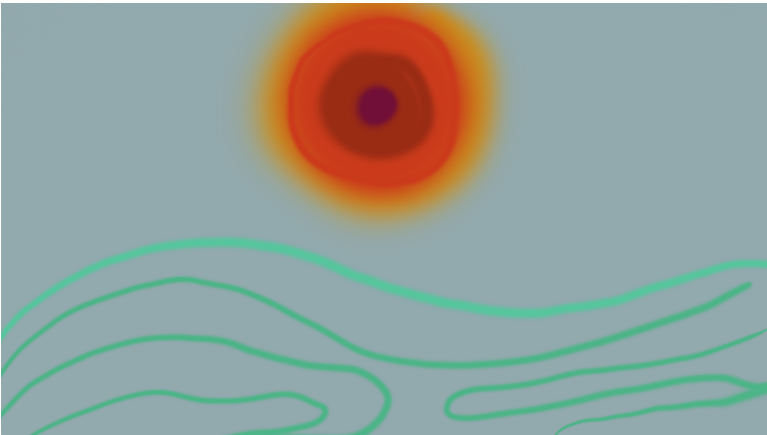


A memory/flashback about beach
Gradually turns into black&white and blur at the end
Shows the memory gone away soon

Lonely emotion
Seagull on the waves
Soft at first, geometric at end

Ocean/sea covered the sun
Then the world lose the light in a second spiral

Zoom in



Sun Ae
Background Ae
Waves Ps => png

